

KAATERSKILL FALLS AND RELATED TRAILS

BASTION FALLS

Bastion Falls is the most accessible and most prominent waterfall in Kaaterskill Clove, dropping 71 feet in two steps along Lake Creek adjacent to where Route 23A makes a horseshoe curve at the trail to Kaaterskill Falls. Parking is available at the Molly Smith parking area on the south side of Route 23A.

Turn right out of the parking lot and go 3 miles, then turn right onto Route 214. After .2 miles, turn left to stay on Route 214. Go 12 miles to the end of Route 214 and turn right onto Route 23A. Drive 6 miles to parking on right.



KAATERSKILL FALLS



Kaaterskill Falls is a two-tiered waterfall that totals a 231 ft drop, the upper tier falling 167 feet and the lower 64 feet. The falls are one of America's oldest tourist attractions, appearing in some of the most prominent books, essays, poems and paintings of the early 19th century. Beginning with Thomas Cole's first visit in 1825, the falls became an iconic subject for painters of the Hudson River School, setting the wilderness ideal for American landscape painting. Like most of the rest of the waterfalls in Kaaterskill Clove, the drainage area above Kaaterskill Falls is fairly limited and while the falls do flow year round there is a significant reduction in the volume of water present in Lake Creek during the dry season. Access the trail from the Molly Smith parking area on the south side of Route 23A. The trail head is located 0.2 miles down the road from the parking area. From the trailhead it is 0.5 miles to the waterfall. There is a moderate climb for the first 250 feet, then the trail levels off to a gentle climb following the creek. DEC contractors recently completed a new foot trail leading from the end of the marked Kaaterskill Falls trail at the base of the falls upslope to the middle pool of the falls, which included installation of a new stone staircase. The trail was also extended from the middle pool to the Escarpment trail creating a key linkage

between the top and the bottom of the falls, allowing hikers to avoid a potentially dangerous bushwhack between the two locations. The top of Kaaterskill Falls is also accessible from the end of Laurel Road. There is a parking lot and a fully accessible trail leading to a new overlook platform at the top of the falls. These features improve the public's view of the falls from the top and enhance safety by directing people to a safe viewing area away from the top of the falls.

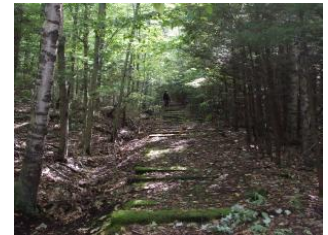
Directions to upper trail: *Turn right out of the parking lot and go 3 miles, then turn right onto Route 214. After .2 miles, turn left to stay on Rt. 214. Go 12 miles to the end of Route 214 and turn right onto Route 23A. Drive 4.4 miles, turn left onto N. Lake Rd. Travel 1.8 miles and turn right onto Laurel House Rd. Travel .4 miles to parking lot.*

Directions to lower trail: *Turn right out of the parking lot and go 3 miles, then turn right onto Route 214. After .2 miles, turn left to stay on Route 214. Go 12 miles to the end of Route 214 and turn right onto Route 23A. Drive 6 miles to parking on right.*

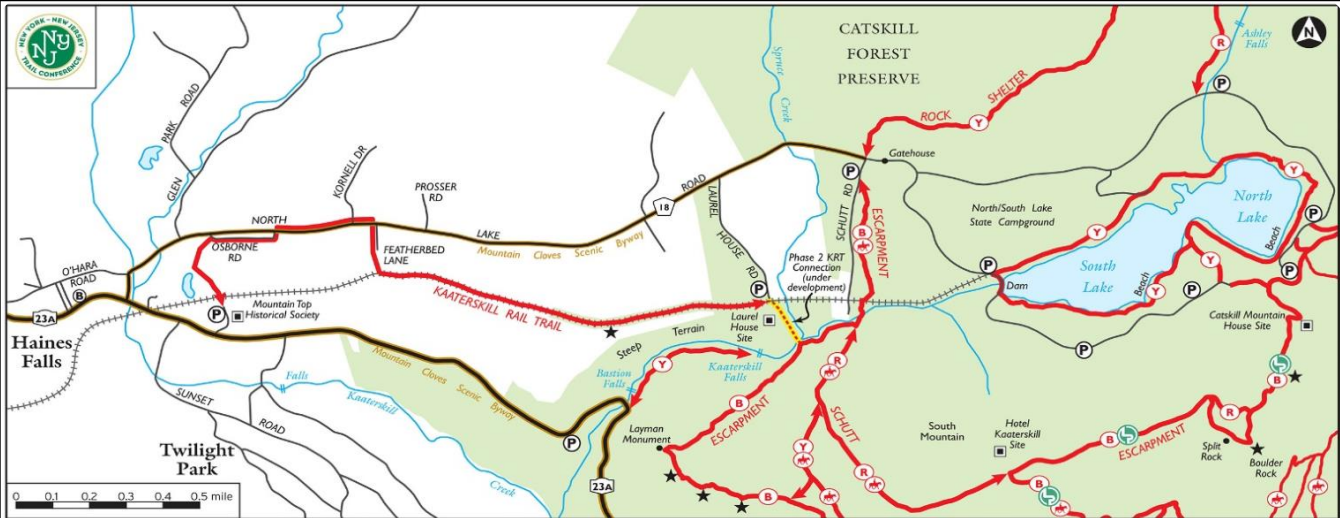
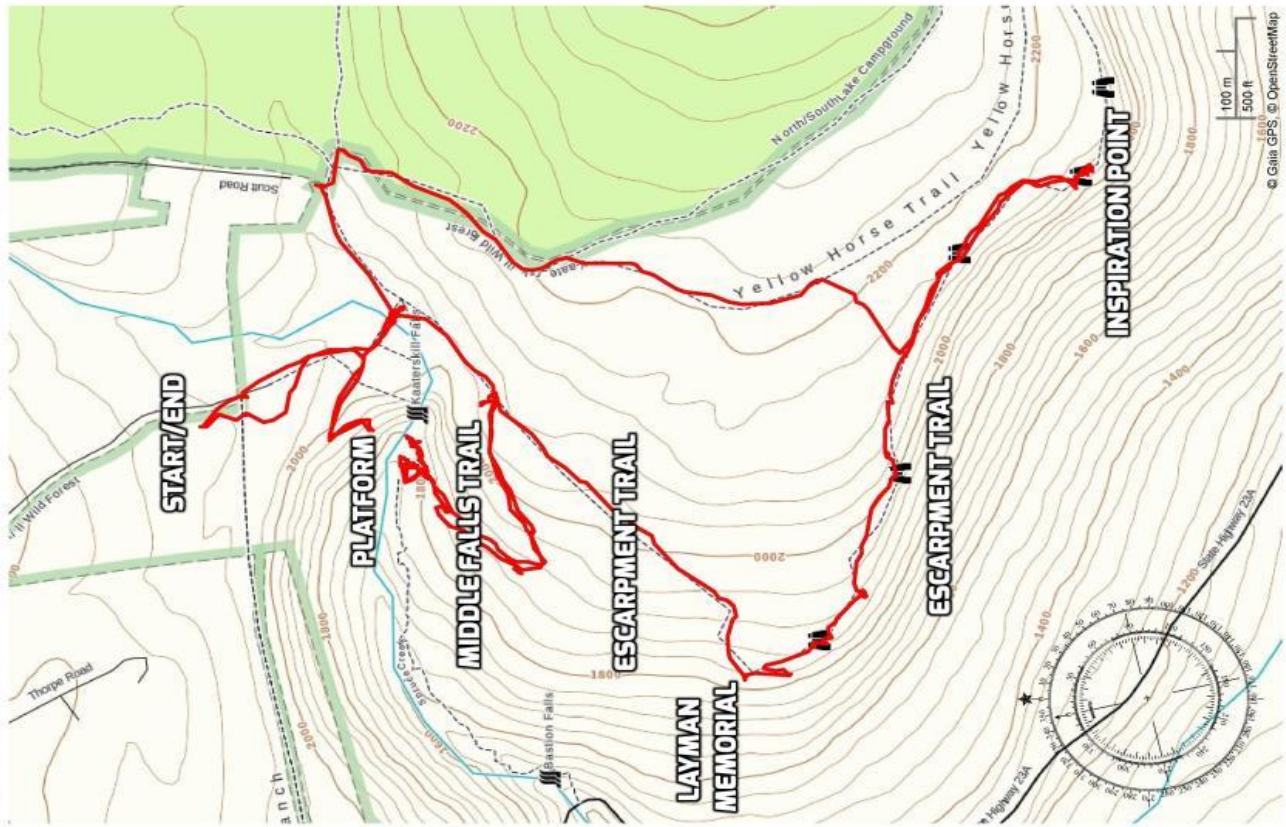


Hiking Advisory for Kaaterskill Falls: Please **DO NOT** stray from the designated paths. Alongside its beauty, Kaaterskill Falls can be extremely dangerous and has taken the lives of many overzealous hikers over the years. When hiking this popular waterfall, it's important to always take precautions. Never attempt to hike beyond the end of the designated hiking trail and do not try to hike any portion of the waterfall itself on either tier. The bedrock is very exposed and eroded causing very dangerous conditions.

KAATERSKILL RAIL TRAIL: Kaaterskill Rail Trail starts at the Mountain Top Historical Property on the former Ulster and Delaware Railroad, and ends at Laurel House Road, just above Kaaterskill Falls where you can enjoy many different views of the Falls. These rail road tracks run right next to the rim of Kaaterskill Clove and Kaaterskill Falls. Years ago, it had a fantastic view of the falls, but today the trees have overgrown the view point from 100 years ago. There are still railroad ties on these tracks. On the left, you will see a small trail that will follow the old Laurel House Road. You want to go **RIGHT**, and stay on the carriage road. If you look carefully on the left you will see the foundation of the old Laurel House. There are now a lot of trees where the hotel used to be.



***The trails listed in this flyer are off Emerson Resort & Spa property.
The Emerson is not responsible for any change in hours, pricing and/or trail routes.***



Kaaterskill Rail Trail

Marked trails (trail color/trail use): Blue Red Yellow Horse Long Path

Scenic byway: ————

Abandoned railbeds: ++++++

Parking (P) Scenic view (★) Waterfall (⚡)

Bus Stop (B) Public park lands (■)

The New York-New Jersey Trail Conference is a nonprofit organization that partners with parks and mobilizes thousands of hard-working volunteers who create, maintain, and protect more than 1,650 miles of public trails in the region. This map is adapted from Catskill Trails, a six-map set that shows all designated trails within the Catskill Park. Trail Conference maps and books are your guides to hundreds of miles of hiking paths in the New York-New Jersey region. Look for them at outdoor stores or order online at www.nyjnyc.org.

Learn more about the trails and opportunities to volunteer!

NY-NJ Trail Conference
156 Ramapo Valley Road, Mahwah, NJ 07430
201.52.9348 www.nyjnyc.org

© 2013 New York-New Jersey Trail Conference, Inc.

